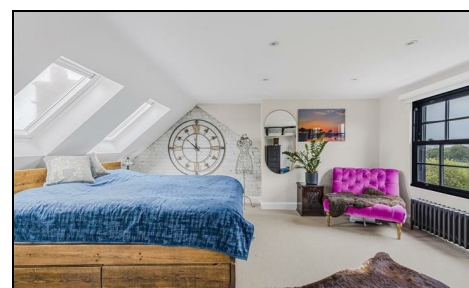


## Grand Drive Raynes Park, SW20 9DY

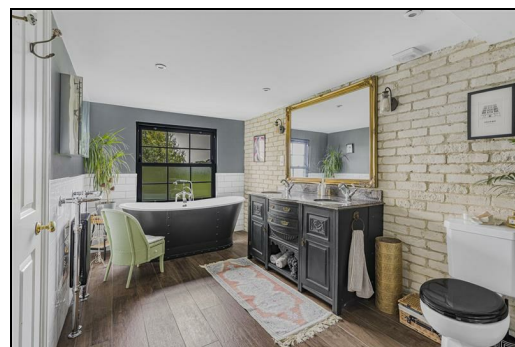
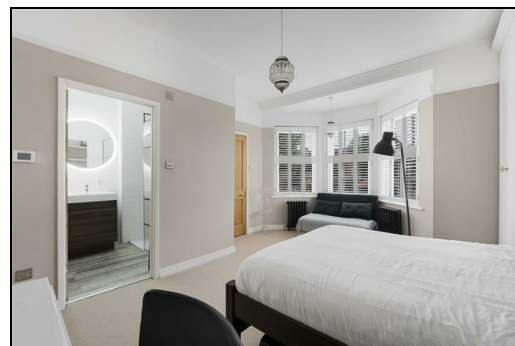
**Offers Over £1,500,000 Freehold**



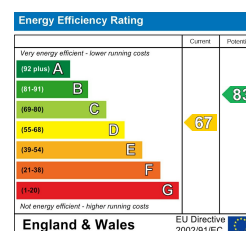
**This stunning five bedroom semi-detached property has been renovated meticulously and to a truly exceptional standard. With high ceilings, large living spaces, high specification kitchen, superb loft extension and panoramic views over the green spaces of Prince Georges Playing Field, this home is set up for a large family, friends and entertainment. To the ground floor this charming house benefits from a large hallway, spacious living room leading to an extensive landscaped garden with a home office and gymnasium, custom made designer kitchen/ dining room, WC and a study. Off-street parking for two/ three cars. Must be viewed internally to fully appreciate the accommodation on offer.**



Grand Drive, SW20  
Approximate Gross Internal Area:  
223.55 sq m / 2406 sq ft  
(Excluding retained height  
under 1.5m (5ft 0in) in 2225 ft)  
(Cm = Ceiling Heights)



- Five Bedrooms
- Custom Made Designer Kitchen/Dining Room
- Spacious Reception Room
- Stunning Loft Extension
- Extensive Landscaped Garden
- Home Office/ Gymnasium
- Large Entrance Hall
- High Specification Throughout
- EPC Rating - D
- Council Tax Band - G



For Free Mortgage Quote and Best Mortgage Rates, call Ellisons Mortgage Advisor on 0208 944 9595



Although these particulars are believed to be correct, their accuracy is not guaranteed and they do not form part of any contract.

Celebrating 30 years  
of successful Sales and  
Lettings in Merton

